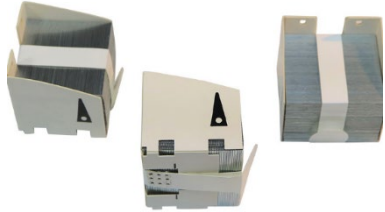


STAPLE CARTRIDGE IDENTIFICATION GUIDE

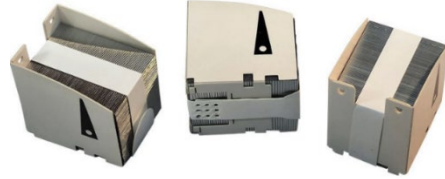
Staple Ordering Tips:

- A. To ensure that the correct staples are ordered, please refer to the below photos and by using the original makers staple cartridge part number, if it is known and verified.
- B. Never order staples based on the machine model only, as most machines can take more than one type of staples!
- C. If you do not have the correct staple or staple part number, then you will need to order your staple cartridge based on your finisher model number.

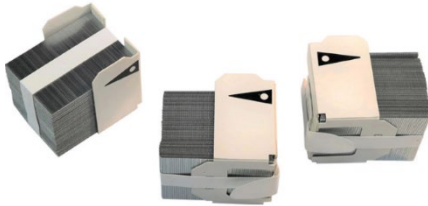
“Dimensions are approximate in inches and the photos are not to scale.”



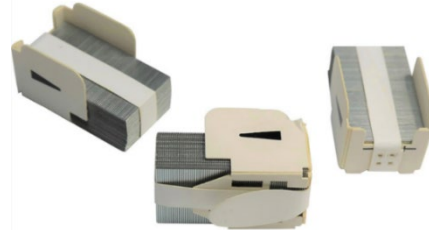
SWING-G1 1.46/1.57/1.46”



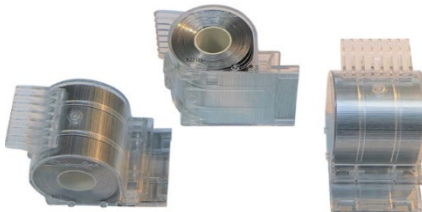
SWING-E1 1.46/1.11/1.45”



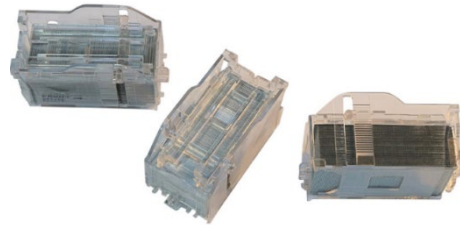
SWING-J1 1.45/1.11/1.31”



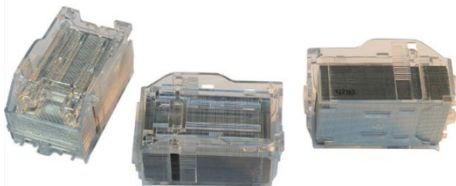
SWING-MS2C 1.49/0.80/0.80”



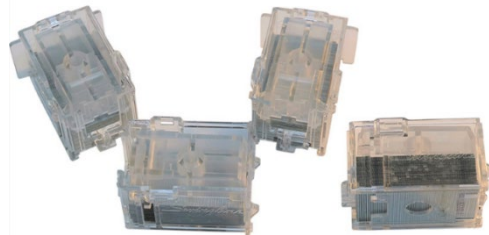
SWING-N1 2.90/184/1.79”



SWING-P1 2.46/1.21/1.31”



SWING-SH12 2.46/1.36/1.32”



SWING-W 1.79/1.32/0.99”